



The product images are for illustration purposes only. Actual product appearance, ports, keyboard layout, and accessories may vary by model.

- Intel Core i7-14700HX, 20C (8P + 12E) / 28T, P-core 2.1 / 5.5GHz, E-core 1.5 / 3.9GHz, 33MB Intel Smart Cache
- 2x 16GB SODIMM DDR5-5600
- 1TB SSD M.2 2242 PCIe 4.0x4 NVMe
- NVIDIA GeForce RTX 5060 8GB GDDR7, Boost Clock 2497MHz, TGP 115W, 572 AI TOPS
- Windows 11 Home Single Language, Arabic / English
- Case color - Eclipse Black
- 2Y Premium Care with Onsite upgrade from 1Y Courier/Carry-in

Premium Care - Advanced Support from Real People. Real Fast.



REAL PERSON

Choose how you want to reach us - through the phone, chat or email - our expert technicians will take care of you.



REAL FAST

Highly trained technicians will provide you real-time solutions, whatever the issue, on your first contact. If needed, our team will schedule an onsite visit for the next business day.



HASSLE FREE

'Getting started' and 'how-to' assistance for hardware and software. Easy solutions that are simple to reach - that's how Premium Care delivers you the ideal support experience.



PC HEALTH CHECK

Free annual PC Health Check that allows our experts to spot issues before you do so they can resolve them quickly and help you avoid PC problems.

Accidental Damage Protection - Protection of your PC from the unexpected.

Experience shows that a significant portion of devices may be damaged (and not covered under warranty) in the first three years. Lenovo's Accidental Damage Protection service covers accidents beyond the system warranty such as drops, spills, bumps and even electrical surges. Make sure your new device has maximum protection, avoid unplanned costs and get peace of mind.

Base Warranty - Included with the systems you purchase, default 1- or 3-year coverage window.

Warranty Extensions & Upgrades - Service and protection that's right for your circumstances.

- Pick Up & Return Courier
- Onsite Support

- Technician Installed Customer
- Replaceable Unit Service
- International Warranty Upgrade

Recommended Accessories Egypt



Lenovo Wireless Headphone 2000

GXD1W20502



ThinkPad Bluetooth Presenter Mouse (Aura Edition)

4Y51T62792



Lenovo USB 20Gbps USB-C to USB-C Cable 1.5m

4X91U92143



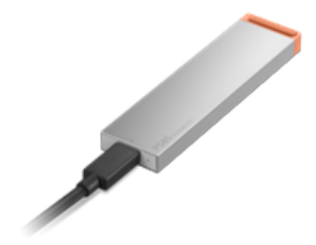
Lenovo Legion 17" Gaming Backpack GB800 (Light Gray)

GX41U39300



Lenovo 245W AC Adapter (Slim tip)-EU

GX21T87702



Lenovo PS8S Portable SSD 4TB

4XB1T91892

>> [View More Accessories](#)

PERFORMANCE**Processor**

Intel Core™ i7-14700HX, 20C (8P + 12E) / 28T, P-core 2.1 / 5.5GHz, E-core 1.5 / 3.9GHz, 33MB Intel® Smart Cache

AI PC Category

AI-Powered Gaming PC^[1]

NPU

None

Graphics

NVIDIA GeForce RTX™ 5060 8GB GDDR7, Boost Clock 2497MHz, TGP 115W, 572 AI TOPS

Chipset

Intel® HM770 Chipset

Memory

2x 16GB SODIMM DDR5-5600

Memory Slots

Two DDR5 SODIMM slots, dual-channel capable

Max Memory^[2]

Up to 32GB DDR5-5600 offering

Storage

1TB SSD M.2 2242 PCIe® 4.0x4 NVMe®

Storage Slot

Two M.2 2280 PCIe® 4.0 x4 slots

Max Storage Support^[3]

Up to two drives, 2x M.2 SSD • M.2 2242 SSD up to 1TB each

Optical

None

Card Reader

No Card Reader

Audio Chip

High Definition (HD) Audio, Realtek® ALC3287 codec

Speakers

Stereo speakers, 2W x2, audio by HARMAN, optimized with Nahimic Audio

Microphone

2x, Array

Camera

5.0MP with E-shutter

Battery

80Wh

Power Adapter

245W Slim Tip (3-pin)

Special Features

AI Chip: LA1

DESIGN**Display**

15.1" WQXGA (2560x1600) OLED 1000nits (peak) / 500nits (typical) glossy, 100% DCI-P3, 165Hz, Dolby Vision®, DisplayHDR™ True Black 600

Touchscreen

None

Screen-to-Body Ratio

OLED models: 90% AAR (active area ratio)

Color Calibration

Factory Color Calibration

Pen

Pen Not Supported

Keyboard

24-Zone RGB Backlit, Arabic

Touchpad

Buttonless Mylar® surface multi-touch touchpad, supports Precision TouchPad (PTP), 75 x 120 mm (2.95 x 4.72 inches)

Dimensions (WxDxH)^[4]

344.9 x 255.35 x 19.95-21.54 mm (13.58 x 10.05 x 0.79-0.85 inches)

Weight^[5]

Starting at 1.9 kg (4.19 lbs)

Case Color

Eclipse Black

Case Material

Aluminium (Top), PC-ABS + 15% Talc (Bottom)

Surface Treatment

Aluminium Stamping (Anodized with Sandblasting)

SOFTWARE**Operating System**

Windows® 11 Home Single Language, Arabic / English

Bundled Software

Office Trial

CONNECTIVITY**WLAN + Bluetooth**

Wi-Fi® 7, 802.11be 2x2 + BT5.4

WWAN

WWAN Not Supported

Ethernet

100/1000M (RJ-45)

Standard Ports

- 2x USB-A (USB 5Gbps / USB 3.2 Gen 1)
- 1x USB-A (USB 5Gbps / USB 3.2 Gen 1), Always On
- 1x USB-C® (USB 10Gbps / USB 3.2 Gen 2), with USB PD 95-100W and DisplayPort™ 2.1^[6]
- 1x USB-C® (USB 10Gbps / USB 3.2 Gen 2), with DisplayPort™ 1.4
- 1x HDMI® 2.1, up to 8K/60Hz
- 1x Headphone / microphone combo jack (3.5mm)
- 1x Ethernet (RJ-45)
- 1x Slim tip Power connector

Docking

Various docking solutions supported via USB-C®. For more compatible docking solutions, please visit [Docking for Legion 5 15IRX10](#)

SECURITY & PRIVACY**Security Chip**

Firmware TPM 2.0 Enabled

Fingerprint Reader

No Fingerprint Reader

Other Security

E-shutter

SERVICE**Base Warranty**

1-year, Courier or Carry-in

Included Upgrade

2Y Premium Care with Onsite upgrade from 1Y Courier/Carry-in

ACCESSORIES**Bundled Accessories**

None

CERTIFICATIONS**Green Certifications**

- ENERGY STAR® 9.0
- EPEAT™ Gold Registered
- ErP Lot 6/26
- RoHS compliant

Other Certifications

- TÜV Rheinland® Flicker Free
- TÜV Rheinland® Low Blue Light (Hardware Solution)

MODEL

TopSeller : No **EAN / UPC / JAN:** 199272261339

Announce Date: 2025-07-14 **End of Support** : 2057-02-07

Note:

[1] AI-Powered Gaming PCs feature Lenovo AI Engine+ and NVIDIA GeForce RTX GPUs to handle AI-driven tasks and deliver exceptional gaming performance.

[2] The max memory is based on the test results with current Lenovo memory offerings.

[3] The storage capacity supported is based on the test results with current Lenovo storage offerings.

[4] The system dimensions may vary depending on configurations.

[5] The system weight is approximate and based on results in Lenovo lab, which varies depending on the source of component, variance of the distribution of each component, and manufacturing process. It may not be the exact weight for each specific model.

[6] Supports Lenovo protocol for 140W charging but requires a unique Lenovo adapter for operation.

- Please refer to the official [Lenovo store website](#) or contact a local Lenovo sales representative or authorized business partner for current inventory and purchase options.
- Lenovo reserves the right to change specifications without notice.